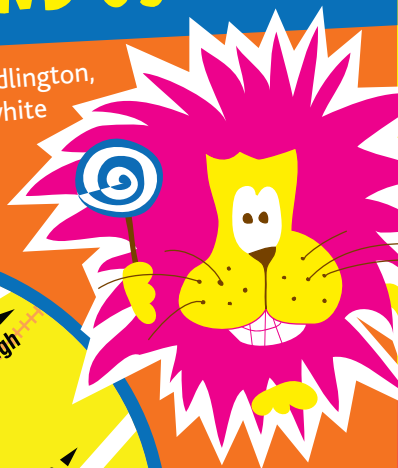


# HOW TO FIND US

Situated 2 miles outside Bridlington, just follow the brown and white tourist signs for John Bull World of Rock (situated on the same site).



**AMPLE FREE PARKING**

## PEAK

(Sat, Sun & Sch hols - Max 2 hrs)

Under 6 mths	FREE
6-12 mths	£1.00
1-4 yrs	£3.85
5-12 yrs	£4.45
Adults	50p (1 adult free with a paying child)

## OFF-PEAK

(Term-time weekdays - Max 3 hrs)

Under 6 mths	FREE
6-12 mths	£1.00
1-4 yrs	£2.75 (inc 1 glass of juice)
5-12 yrs	£3.60 (inc 1 glass of juice)
Adults	50p (1 adult free with a paying child)

## Also why not extend your visit ...

**John Bull's  
WORLD  
OF ROCK**  
A real factory tour

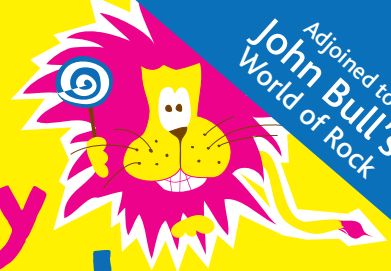
### See it being made

Situated next to Candy Kingdom John Bull's World of Rock reveals the secrets of rock and chocolate production.



Adjoined to  
**John Bull's  
World of Rock**

# John Bull's Candy Kingdom



**FULLY AIR CONDITIONED**  
Indoor Adventure Play Centre

**0-12 Years**



**EXPLORE - CLIMB - SLIDE**

Carnaby, Bridlington YO15 3QY **T: 01262 426 235**  
info@candy-kingdom.com www.candy-kingdom.com

**OPEN** 9.30am-7.00pm every day

# Welcome...

... to Candy Kingdom -  
a great family fun day out!

- 3 storey play frame
- 4 lane astra slide
- maze
- ball cannons
- sports arena
- toddlers area (0-3yrs)
- hot or cold snacks, meals & drinks and lots more...



**NB** Children should wear trousers and socks in the play area at all times.



While your child plays... why not take advantage of our extensive menu containing a wide selection of freshly prepared hot or cold snacks, meals and drinks. We offer a variety of menu options specially designed for children including meal deals with healthy choices such as yogurt and fruit.

## EXPLORE - CLIMB - SLIDE